

PRO-WOODWORKER™  
SERIES

# ProMAX

## Drawer Pack™

Stock No. 40-083

Thank you for purchasing our ProMAX Drawer Pack. This product comes with all the parts necessary for making two drawers. These drawers will fit into any Bench Dog brand ProMAX Professional Cabinet, as well as into any ProBench cabinet.

### Contents of Box

		p/n
2	left side panel	20-0052-01
2	right side panel	20-0053-01
2	back panel	20-0054-01
2	bottom panel	20-0055-01
1	short front panel	20-0051-01
1	tall front panel	20-0050-01
2	drawer slides, pr	17-0058-01
1	handle, nickel	17-0052-01
2	washers, 1/2" OD	12-0022-03
8	round head bolt, 1/4-20 x 2"	10-0006-50
8	cross dowels, 1/4-20	17-0047-01
24	pan head screw, #8 x 1/2"	10-0068-08
8	pan head screw, #8 x 1-1/2"	10-0068-24
1	hex wrench, 5/32"	13-0001-05

Read and understand the entire contents of this manual before attempting assembly or operation of this tool! Inspect contents for shipping damage and shortages. Report problems directly to Bench Dog, Inc.



**Bench Dog, Inc.**  
3310 5th St. NE  
Suite 100  
Minneapolis, MN 55418

612.782.8205 main  
612.788.2518 fax  
800.786.8902 toll free  
info@benchdog.com  
www.benchdog.com

QUESTIONS?

**1-800-786-8902**

Be sure to check out our web site for all the latest and greatest accessories and tools.

**www.benchdog.com**

**1. Screw the side panels to back panels, as shown.**

Use (8) #8 x 1-1/2" pan head screws. Both drawers use the same left and right side panels, and back panels. Build both drawers simultaneously to save time. All panels have a groove to accept the bottom panels. Position these grooves to the inside of the drawers, as shown.



#8 x 1-1/2" pan head screw



**2. Slide in the bottom panels, as shown.**

Do not glue the panels, just slide them in.



**3. Attach the drawer fronts.**

Use the (8) round head bolts and cross dowels. Install the cross dowels before inserting the bolts. You will fine adjust the drawer front reveals after you install them into your cabinet. Just snug the bolts for now.



1/4-20 x 2"  
round head bolt



1/4-20"  
steel cross dowel



**4. Install the (2) drawer handles.**

Use the hardware the comes with the metal drawer handles. Be sure to place the (4) small flat washers under the handles.



**5. Separate the slides prior to attachment.**

You can not attach the full extension ball bearing drawer slides to the drawers or cabinet **until** you separate them into two halves. As you pull them apart, push down on the little black lever. In the photo to the right, the operator is pushing down on the black lever with his right index finger.



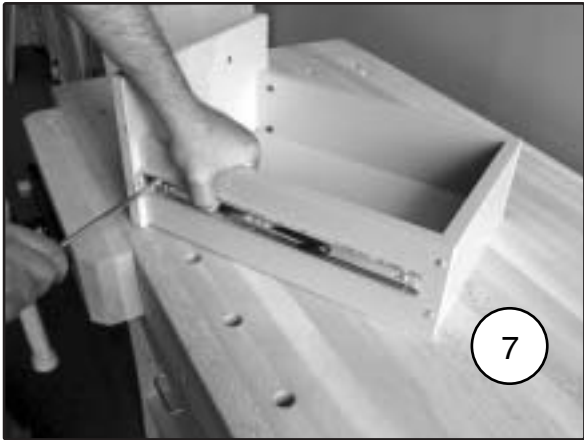
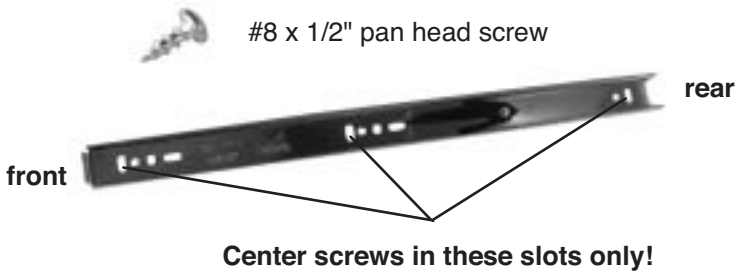
**6. Slides separated.**

In this photo you can see what the slides look like separated. The slide half in the operator's right hand attaches to the drawer. The slide half in the operator's left hand attaches to the cabinet. **Do not mix this up!** Note: there is no left or right orientation. The slides work both to the left or right in the same way.



**7. Attach the (4) slide halves to the drawers.**

Use (3) #8 x 1/2" pan head screws for each slide half, as shown. Repeat for the other three drawer slide halves. Center the screws in the slots, as shown below. **Be sure to position the front of the slide halves to the front of the drawers!** There is no left or right orientation.



**8. Attach the (4) slide halves to the cabinet.**

Use (3) #8 x 1/2" pan head screws per slide half. It will be easier to install the slides if you lay the cabinet down on its back, as shown. **Be sure to position the front of the slide halves to the front of the cabinet!** There is no left or right orientation.



**9. Install the drawers into the cabinet.**

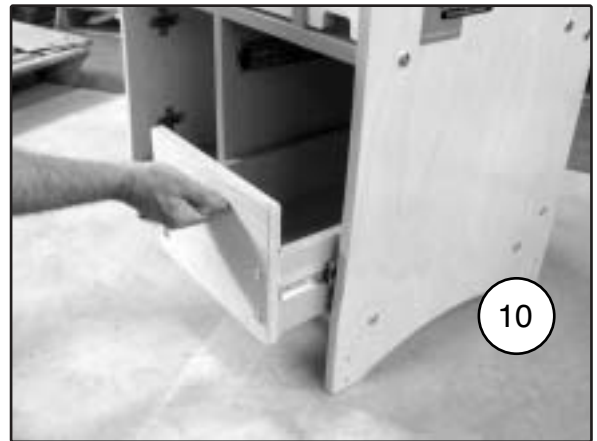
Carefully align the two slide halves, and gently push the drawer into the cabinet.



**10. Keep pushing!**

You will encounter a fair amount of resistance just before the drawer is pushed all the way in for the first time. This is OK! Keep pushing until fully closed. The next time you open and close the drawer, you will not feel this resistance.

**Note: To remove the drawers, be sure to push the little black levers, as you did in Step 5. You will not be able to slide off the drawers unless you do this!**



**11. Fine adjust the drawer front reveals, if necessary.**

To align the drawer front reveals, simply loosen the four bolts that hold the drawer front to the drawer body and reposition the drawer front. Then, retighten the bolts.



**12. Retighten all bolts.**

After a few hours of use, and from time to time, retighten all bolts, as necessary.