



Thank you for purchasing our zero clearance insert for use with ProLift top adjust router systems and ProPlate aluminum insert plates. Be sure to take a look at the entire line of Bench Dog Tools online at www.benchdog.com.

BENCH DOG, INC.
3310 5th St. NE
Minneapolis, MN 55418

612.782.8205 main
612.788.2518 fax
800.786.8902 toll free
info@benchdog.com
www.benchdog.com

Zero Clearance Insert

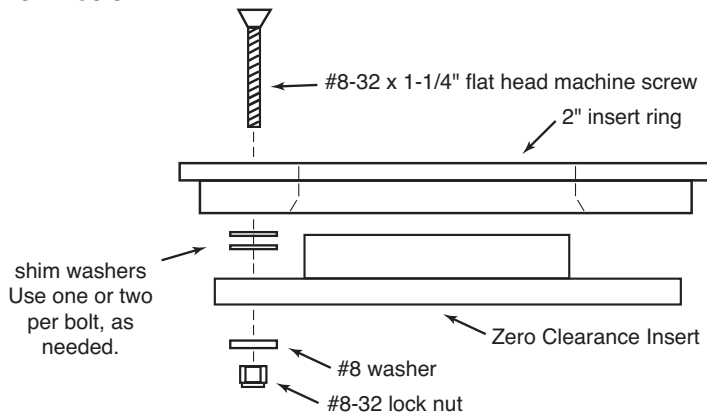
(Old Model ZC1000)
Stock No. 40-039

Contents of Bag

- 1 zero clearance insert
- 3 flat head machine screw, #8-32 x 1-1/4"
- 3 flat washer, #8
- 3 lock nut, #8-32
- 1 hex wrench, 3/32"
- 6 shim washers (very thin)

Step 1. Install the Zero Clearance Insert.

Remove the insert ring from plate. Use the included 3/32" hex wrench and your 11/32" (or crescent) wrench to install the zero clearance insert, as shown below.



Step 2. Install 2" insert ring.

Re-install the 2" ring. Make sure that your router bit does not contact or interfere with the installed zero clearance insert. If it does, lower the router bit.

Always use the insert ring hold-down screws!

Before use, confirm that no part of your router contacts the insert!

Step 3. Raise router bit through insert (ProLifts ONLY!).

If your router bit is not designed for plunge cutting, you must first drill a hole in the zero clearance insert with your drill press. For example, most bearing guided bits will NOT plunge cut through the insert! If your bit can plunge, and if you have a ProLift, turn on your router and slowly adjust the height to cut through the insert. Always use your blade guard. Here the guard has been removed for clarity only. **Do not raise the router quickly!** Once through the insert, set the bit to your desired height. Be careful not to bottom out the collet on the underside of the insert! For all other applications, you must first drill your bit hole with a drill press.

Bits not designed for plunge cutting require you to first drill a pilot hole!

If you do not have a ProLift, you must first drill a hole for the bit to go through!

